



Environmental Product Declarations: The Case of Romania

Bucharest, 9th of October 2017

Co-funded by the
Erasmus+ Programme
of the European Union



Centro Tecnológico
del mármol, piedra y materiales



certificazione materiali per costruzioni



CTCV



Universitatea
TRANSILVANIA
din Braşov



ROMANIA
GREEN
BUILDING
COUNCIL

Types of ecolabels that promote the environmental qualities of products based on its life cycle:

- ecolabel type I - voluntary schemes that affirm the environmental impact of a product;
- environmental self-declarations (type II) - the manufacturer performs it with or without certification of a competent authority;
- environmental product declarations (III) - are verified and they establish the environmental behaviour of the product.

How EPD's work?

- Creating an Environmental Product Declaration (EPD) requires companies to commit to fully disclose what is usually confidential information about how their products are made.
- companies must perform a comprehensive life cycle assessment according to ISO 14040 standards. From this information an EPD is developed based on ISO 14025 standards. Both the EPD and the LCA have to be third party verified.

EPD's include:

- information on product;
- company information;
- the environmental impact of raw material extraction;
- selection, acquisition, production process energy use and efficiency;
- content of materials and chemical substances;
- emissions to air, soil and water;
- waste management.

The case of Romania

- EPDs are related to national legislation via the following standards: SR EN ISO 14020:2002; SR EN ISO 14025:2010; SR EN ISO 14040:2002; SR EN ISO 14041:2002; SR EN ISO 14042:2002; SR EN ISO 14043:2003; SR EN ISO 14044:2007.
- no accredited body to emit EPDs and all the declarations are being issued by international entities.
- The National Institute for Research and Development in Buildings, Urbanism and Sustainable Regional Development “URBAN INCERC”, established in 2009, is the only recognized institution to perform testing on materials and emit performance certifications.

Support tools

- Romania Green Building Council has established procedures for EPDs to be easily integrated into the environmental certification tools such as GREEN HOMES and promotes the EPDs for point recognition in the LEED or BREEAM international certification.
- In the case of Living Building Challenge certification system, the Materials petal is designed to encourage a successful materials economy that is non-toxic, transparent and socially equitable. The two Imperatives directly addressed by Declare are Imperative 11 – Red List and Imperative 14 –Appropriate Sourcing.



ENVIRONMENTAL PRODUCT DECLARATION

as per ISO 14025

Owner of the Declaration
Programme holder
Publisher
Declaration number
Issue date
Valid to

Interface Europe
Institut Bauen und Umwelt (IBU)
Institut Bauen und Umwelt (IBU)
EPD-IBF-2012611-E
19.06.2012
18.06.2017

Interface®

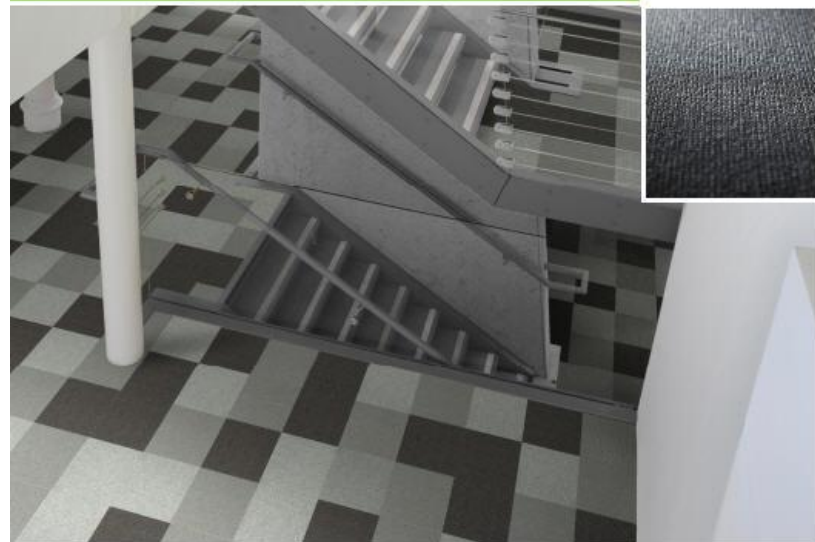
Biosfera Micro

Microtufed modular carpet tiles
having a surface pile of 100% recycled solution-dyed polyamide 6
and a Graphlex® backing system

www.bau-umwelt.com



Institut Bauen
und Umwelt e.V.



Examples of EPD product used in Romania

Saint Goban is one of the first glass producer to have performed a complete Life Cycle Assessment (LCA) of their products in accordance with international standards (ISO 14025, 14040 & 14044). They have two types of EPDs for:

- EPD For Basic Products (Saint-Gobain Glass). The products in this category include Security Diamant, Antelio, Miralite Revolution, Stadip and Masterglass - Decorglass.
- EPD For Processed Products (Glassolutions) such as: Climaplus Protect - Silence, Climaplus 4S - Sun, Climaplus Solar Control, Climatop.

Also, Saint-Gobain Construction Products Romania produces and sells Rigips® with EPD according to EN 15804 și ISO 14025 RB 12,5 mm.

cont.

- Interface is a world leader in recycled content carpet with an established market in Romania for products such as modular carpet tiles, product type 6 Nylon with GlasBac, GlasBacRE and Next Step, Needlefelt with Graphlar.
- Holcim markets the EPD materials such as aggregates, grey cements and ready mixed concrete.

cont.

In the case of Knauf Insulation EPD's are available for the following products: Blowing Wool; Glass Mineral Wool with ECOSE Technology; Mineral Plus; Rock Mineral Wool; Urbanscape; Wood Wool Heraklith and XPS.

Rockwool Stone Wool Thermal Insulation for buildings obtained an EPD according to EN 15804 and ISO 14025 and 3rd party verified ROCKWOOL Group EPD rules and LCA model.

cont.

- Gutex is produced in Germany and sold and ecological insulation on the Romanian market by Natural Paint SRL.
- The nature plus seal of quality and the EPD provides proof for the biological safeness and sustainability of the insulation products manufactured by GUTEX.
- Further evidence is the “very good” score received from ÖKO-TEST, a consumer magazine for ecological products.

cont.

- Ytong Energy Plus certified Cradle to Cradle, Xella;
- Styronite certified by the Institut Bauen und Umwelt;
- RHEINZINK offers EPDs according to ISO 14025 Tip III și EN 15804 for the following product lines: PATINA LINE, PROTECT LINE și INTERIEUR LINE and Cradle to Cradle for Patina line;
- Hempcrete - carbon negative concrete, Hempflax (produced and sold in Romania);

Conclusion

- small range of choices regarding EPD products;
- the importance of EPDs is increasingly higher and encouraged by the evolution of green building certification market;
- companies are compelled by both demand and competition to promote greener and better products;

Thank you!

Elena Rastei

Sustainability Specialist

elena.rastei@rogbc.org

+40 734 911 322